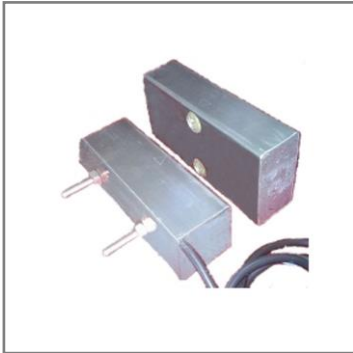




REED MAGNETIC POSITION SENSOR KM-250 “ARTOL” type250

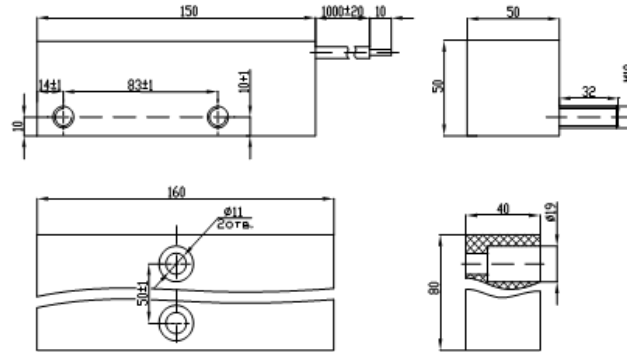


Description

Sensor KM-250 “ARTOL” type250 is designed for switching AC circuits in control systems, locks, structural elements of buildings and structures for the opening or displacement with generation of a signal by switching of AC circuits.

Sensor is designed for switching AC circuits with voltage up to 250 V.

ATTENTION: Sensor KM-250 “ARTOL” type250 is designed to work only in AC circuits of 50/60 Hz!



Dimensions

Dimensions in mm

Enclosure of the position sensor KM-250-100 “ARTOL” is made of stainless steel.

Electrical characteristics

Switching current	≤3,0A
Switching voltage	≤250V AC 50/60 Hz
Switching power max	500W,VA (active, inductive load)
Dimensions	Sensor - 150*50*50mm Magnet - 160*50*50mm
Weight	Sensor - 1,1kg Magnet - 2,0kg
Operating temperature	-50...+85°C
Humidity	100%

Sensor Magnet	KM-250-NO “ARTOL”250 normally open contact	KM-250-NC “ARTOL”250 normally close contact	KM-250-NO-NC “ARTOL”250 changeover contact
	Contacts of the sensor on non-magnetic surfaces: close ≤130mm open ≥145mm	Contacts of the sensor on non-magnetic surfaces: open ≤110mm close ≥150mm	Contacts of the sensor on non-magnetic surfaces: switch ≤110mm switch back ≥150mm
	Contacts of the sensor on magnetic surfaces: close ≤105mm open ≥120mm	Contacts of the sensor on magnetic surfaces: open ≤90mm close ≥125mm	Contacts of the sensor on magnetic surfaces: switch ≤90mm switch back ≥125mm